

TRACTEBEL ENGINEERING -member of the GDF SUEZ Group- is an Architect-Engineer and Consulting-Engineer active in the energy sector.

The Company was involved in ITER since more than 10 years through BELGATOM and the EFET grouping.

Assets & experiences

- a staff of 3300, among which more than 1000 graduate engineers and technical experts
- multidisciplinary competences and 40 years of experience in energy and nuclear technology
- Architect-Engineer for all seven Belgian NPP's with considerable experience in the field of PWR auxiliaries and cooling systems design
- large experience in accident transient analysis
- excellent knowledge of all the main regulatory systems, codes and standards
- operational experience at all Belgian NPP's
- radwaste management and fuel cycle activities
- ISO 9001 certification

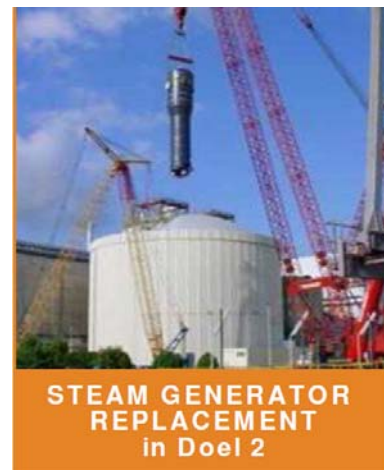
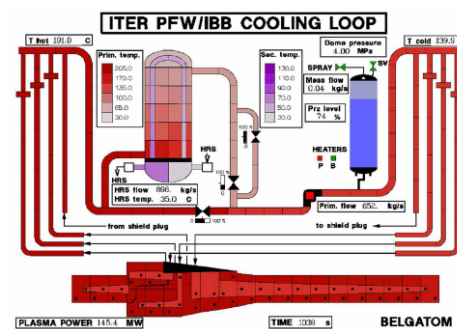
TRACTEBEL ENGINEERING ITER experience

Some twenty projects in the EFDA framework:

- safety analyses, based on complex simulation models using the ATHENA thermal-hydraulic calculation code
- design studies of the Primary Heat Transfer Systems, the cooling systems, and the related auxiliary systems
- Site studies

TRACTEBEL ENGINEERING is interested in assignments for engineering and project management services, i.e. typical Owner's Engineer activities.

TRACTEBEL Engineering
GDF SUEZ



Contact Person

Jacques PIRSON
Plant Design Manager
Process & Systems
Nuclear
TRACTEBEL Engineering
Brussels
E-mail jacques.pirson@gdfsuez.com

Tel. :+32 2 773 8377
Mob.: +32 476 964118
Fax :+32 2 773 8900
www.tractebel-engineering-gdfsuez.com
7, Avenue Ariane
B-1200 Brussels
BELGIUM